

**Aldreds**  
Estate Agents



18 Johnson Way

Lowestoft, NR32 4WW

Asking Price £255,000



3



2



1



C

## 18 Johnson Way

Lowestoft, NR32 4WW

Aldreds are pleased to bring to market this CHAIN FREE, Semi Detached family home with 3 separate bedrooms on the ever popular Park Hill Estate. BENEFITTING from residing on a large corner plot that offers a considerably larger than average WEST facing rear and side garden with potential to extend (Stp), a garage with parking, uPVC double glazing throughout, a modern combi boiler and is located at the bottom of a peaceful Cul-De-Sac.

The Ground Floor features wood effect laminate flooring throughout and comprises an Entrance Hall with a handy Cloakroom and a door leads into the good size Lounge, French doors then lead into the Kitchen / Diner with an under stairs cupboard, matching wall and base units, worktops on three sides with an undercounter electric oven and gas hob with extractor fan over and an inset single drainer sink and a modern combi boiler (serviced July 2026). French doors lead onto a patio and the large West facing garden that offers a fantastic space to entertain into the evening!

The First Floor comprises 3 bedrooms all off the Landing, a single and a standard double both feature fitted wardrobes as does the Master bedroom but with the bonus of an Ensuite comprising a W.C, shower cubicle and wash basin.

The family Bathroom features a suite of a panel bath, W.C. and pedestal wash basin. Access to the insulated loft is from the Landing.

Outside to the front is a small lawn bisected by a path to the front door, to the right is a timber gate giving garden access and a brick garage with power, sockets, an up and over door with parking to the front.

### Services

Mains Gas, Electricity, Water & Waste.

### Tenure

Freehold

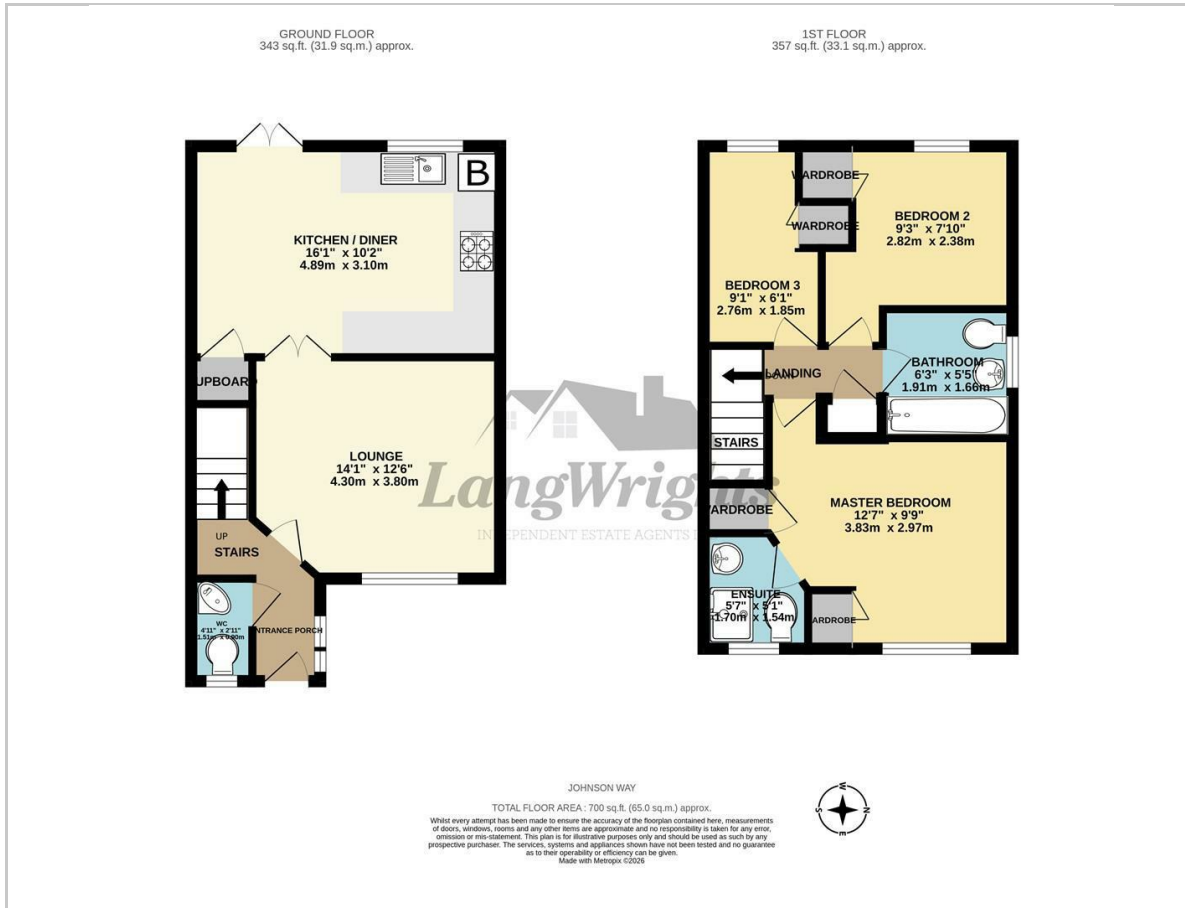
### Council Tax

East Suffolk Council Tax Band B





## Floor Plan



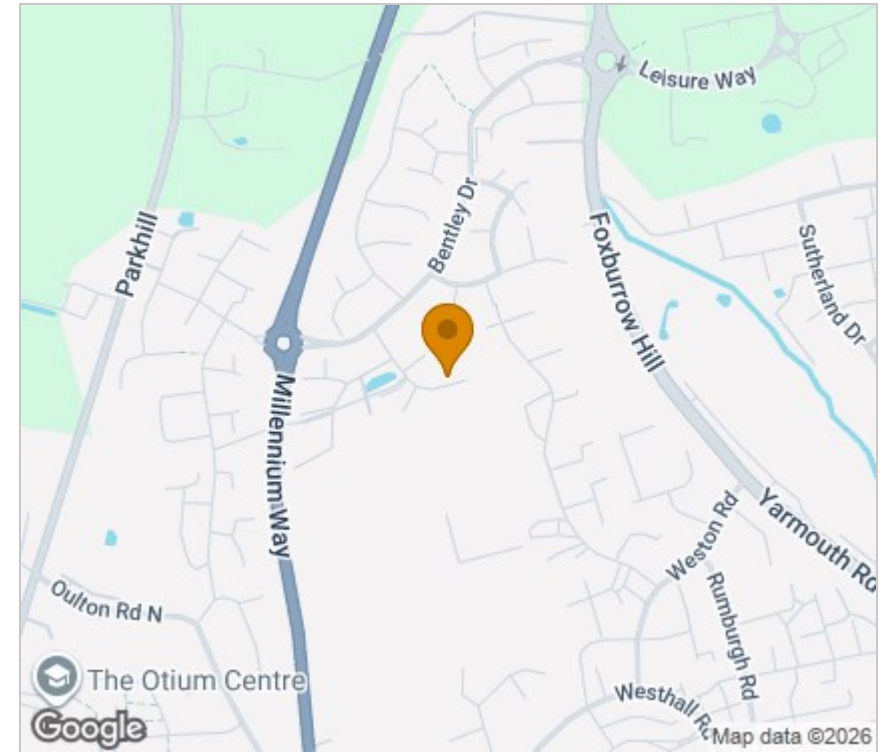
## Viewing

Please contact our Aldreds Lowestoft Office on 01502 565432 if you wish to arrange a viewing appointment for this property or require further information.

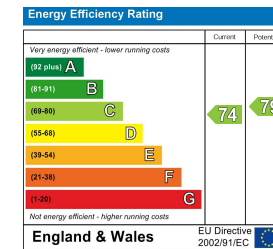
### Disclaimer

These particulars are issued on an understanding that all negotiations shall be conducted through Messrs. Aldreds. Please note: Messrs. Aldreds for themselves and for the vendors or lessors of this property whose agents they are given notice that: 1. Particulars are set out as a general outline only for guidance of intending purchasers or lessees, and do not constitute nor constitute part of, an offer or contract. 2. All descriptions, dimensions, references to condition and necessary permissions for use and occupation, and other details are given without responsibility and any intending purchasers or tenants should not rely on them as statements or representations of fact but must satisfy themselves by inspection or otherwise as to the correctness of each of them. 3. No person in the employment of Messrs. Aldreds has any authority to make or give any representation or warranty whatever in relation to this property. 4. If you are proposing to visit the property and are travelling some distance please check with Aldreds on the issue of availability prior to travelling. 5. Aldreds Property Consultants and associated services may offer additional services to the prospective purchaser for which they will be entitled to receive a commission. Aldreds are pleased to be working with Mortgage Advice Bureau. They're an award-winning mortgage broker with over 1,400 advisers across the UK, and have access to over 12,000 mortgage products from over 90 lenders. Aldreds Estate Agents Ltd receive a commission of £200 on each completed case. Your home may be repossessed if you do not keep up repayments on your mortgage. There may be a fee for mortgage advice. The actual amount you pay will depend upon your circumstances. The fee is up to 1%, but a typical fee is 0.3% of the amount borrowed. Mortgage Advice Bureau is a trading name of Mortgage Seeker Limited which is an appointed representative of Mortgage Advice Bureau Limited and Mortgage Advice Bureau (Derby) Limited which are authorised and regulated by the Financial Conduct Authority. Mortgage Seeker Limited Registered Office: Lovewell Blake, Sixty Six North Quay, Great Yarmouth, Norfolk, NR30 1HE. Registered in England Number: 03721415. 6. Potential purchasers should check with their providers that the broadband and mobile phone coverage they would require is available.

## Area Map



## Energy Efficiency Graph



143 London Road North, Lowestoft, Suffolk, NR32 1NE  
 Tel: 01502 565432 Email: lowestoft@aldreds.co.uk <https://www.aldreds.co.uk/>  
 Registered in England Reg. No. 08945751 Registered Office: 17 Hall Quay, Great Yarmouth, Norfolk NR30 1HJ  
 Directors: Mark Duffield B.S.c. FRICS. Dan Crawley MNAEA Paul Lambert MNAEA